

# Brass Extension Plugs

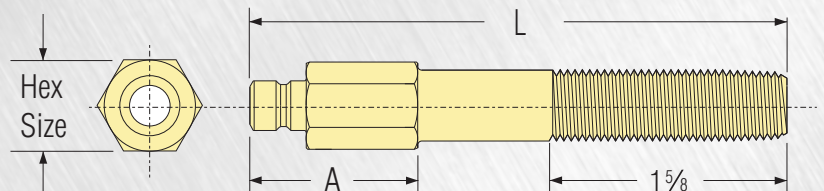
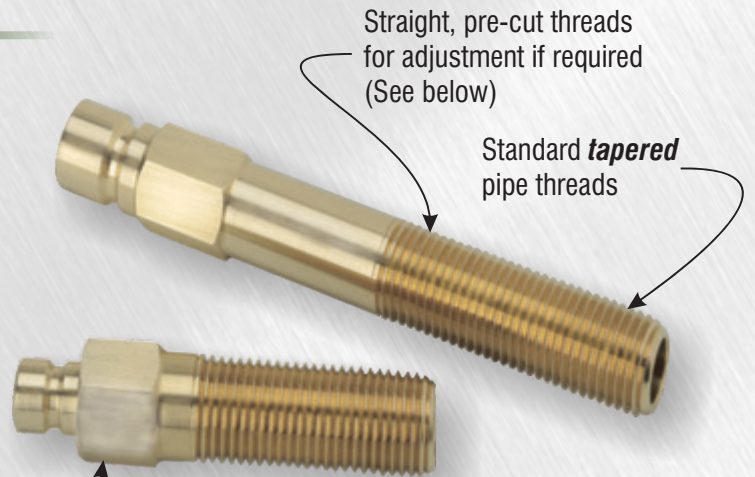
- All Custom Mold Extension Plugs have tapered pipe threads.

*Standard pipe thread systems require tapered external threads to seal in taper threaded holes*

- In stock from 1/16" thru 1/2" pipe, including BSPT pipe sizes.

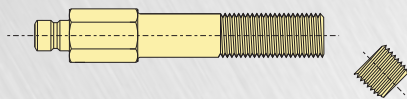
When length adjustments are required, simply cut to length. The straight, pre-cut threads on shank make re-tapering easy.

- Available in brass and stainless steel.
- NPT and BSPT available from stock.

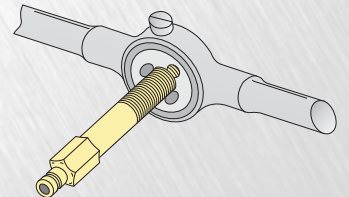


## Length Adjustments

1. When special length adjustments are required, simply cut piece to length and chamfer end.



2. Turn into standard pipe threading die to re-taper threads.



## Exact Length Extension Plugs

- Same quality extension plugs as above, threaded to any required length.
- Simply specify part number along with length required. eg: 352 x 3.187
- Available with pre-applied sealant.
- Order any quantity, same day shipment.



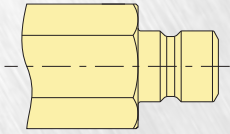
## BSPT & Stainless Extension Plugs

- BSP brass Extension Plugs IN STOCK.
- Many Stainless Extension Plugs IN STOCK.
- Available with pre-applied sealant.
- Order any quantity.



## 200 Series (1/4" Hole)

1/4" HOLE  
Actual Size



Catalog Number	L	Pipe Size	Hex Size	A	Stock Item
----------------	---	-----------	----------	---	------------

### 1/16" Pipe Extensions

250 x 2½	2½	1/16	3/8	11/16	•
250 x 4	4	1/16	3/8	13/16	•
250 x 5½	5½	1/16	3/8	13/16	•
250 x 7	7	1/16	3/8	13/16	•

### 1/8" Pipe Extensions

251 x 2½	2½	1/8	7/16	11/16	•
251 x 4	4	1/8	7/16	1	•
251 x 5½	5½	1/8	7/16	1	•
251 x 7	7	1/8	7/16	1	•
251 x 8½	8½	1/8	7/16	1	•
251 x 10	10	1/8	7/16	1	•
251 x 11½	11½	1/8	7/16	1	•
251 x 13	13	1/8	7/16	1	•

### 1/4" Pipe Extensions

252 x 2½	2½	1/4	9/16	7/8	•
252 x 4	4	1/4	9/16	11/4	•
252 x 5½	5½	1/4	9/16	11/4	•
252 x 7	7	1/4	9/16	11/4	•
252 x 8½	8½	1/4	9/16	11/4	•
252 x 10	10	1/4	9/16	11/4	•
252 x 11½	11½	1/4	9/16	11/4	•
252 x 13	13	1/4	9/16	11/4	•

### 3/8" Pipe Extensions

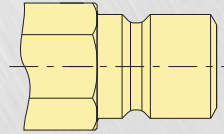
253 x 2½	2½	3/8	11/16	1	•
253 x 4	4	3/8	11/16	11/4	•
253 x 5½	5½	3/8	11/16	11/4	•
253 x 7	7	3/8	11/16	11/4	•
253 x 8½	8½	3/8	11/16	11/4	•
253 x 10	10	3/8	11/16	11/4	•
253 x 11½	11½	3/8	11/16	11/4	•
253 x 13	13	3/8	11/16	11/4	•

### 1/2" Pipe Extensions

Available on request

## 300 Series (3/8" Hole)

3/8" HOLE  
Actual Size



Catalog Number	L	Pipe Size	Hex Size	A	Stock Item
----------------	---	-----------	----------	---	------------

### 1/16" Pipe Extensions

350 x 2½	2½	1/16	9/16	7/8	•
350 x 4	4	1/16	9/16	1	•
350 x 5½	5½	1/16	9/16	1	•
350 x 7	7	1/16	9/16	1	•

### 1/8" Pipe Extensions

351 x 2½	2½	1/8	9/16	7/8	•
351 x 4	4	1/8	9/16	1	•
351 x 5½	5½	1/8	9/16	1	•
351 x 7	7	1/8	9/16	1	•
351 x 8½	8½	1/8	9/16	1	•
351 x 10	10	1/8	9/16	1	•
351 x 11½	11½	1/8	9/16	1	•
351 x 13	13	1/8	9/16	1	•

### 1/4" Pipe Extensions

352 x 2½	2½	1/4	9/16	7/8	•
352 x 4	4	1/4	9/16	11/4	•
352 x 5½	5½	1/4	9/16	11/4	•
352 x 7	7	1/4	9/16	11/4	•
352 x 8½	8½	1/4	9/16	11/4	•
352 x 10	10	1/4	9/16	11/4	•
352 x 11½	11½	1/4	9/16	11/4	•
352 x 13	13	1/4	9/16	11/4	•

### 3/8" Pipe Extensions

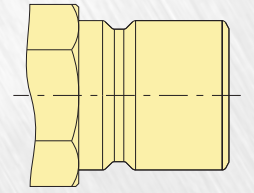
353 x 2½	2½	3/8	11/16	1	•
353 x 4	4	3/8	11/16	11/4	•
353 x 5½	5½	3/8	11/16	11/4	•
353 x 7	7	3/8	11/16	11/4	•
353 x 8½	8½	3/8	11/16	11/4	•
353 x 10	10	3/8	11/16	11/4	•
353 x 11½	11½	3/8	11/16	11/4	•
353 x 13	13	3/8	11/16	11/4	•

### 1/2" Pipe Extensions

354 x 2½	2½	1/2	7/8	11/8	•
354 x 4	4	1/2	7/8	11/2	•
354 x 5½	5½	1/2	7/8	11/2	•
354 x 7	7	1/2	7/8	11/2	•
354 x 8½	8½	1/2	7/8	11/2	•
354 x 10	10	1/2	7/8	11/2	•
354 x 11½	11½	1/2	7/8	11/2	•
354 x 13	13	1/2	7/8	11/2	•

## 500 Series (1/2" Hole)

1/2" HOLE  
Actual Size



Catalog Number	L	Pipe Size	Hex Size	A	Stock Item
----------------	---	-----------	----------	---	------------

### 1/16" Pipe Extensions

Available on request

### 1/8" Pipe Extensions

Available on request

### 1/4" Pipe Extensions

Available on request

### 3/8" Pipe Extensions

553 x 2½	2½	3/8	13/16	11/8	•
553 x 4	4	3/8	13/16	13/8	•
553 x 5½	5½	3/8	13/16	13/8	•
553 x 7	7	3/8	13/16	13/8	•
553 x 8½	8½	3/8	13/16	13/8	•
553 x 10	10	3/8	13/16	13/8	•
553 x 11½	11½	3/8	13/16	13/8	•
553 x 13	13	3/8	13/16	13/8	•

### 1/2" Pipe Extensions

554 x 2½	2½	1/2	7/8	11/8	•
554 x 4	4	1/2	7/8	11/2	•
554 x 5½	5½	1/2	7/8	11/2	•
554 x 7	7	1/2	7/8	11/2	•
554 x 8½	8½	1/2	7/8	11/2	•
554 x 10	10	1/2	7/8	11/2	•
554 x 11½	11½	1/2	7/8	11/2	•
554 x 13	13	1/2	7/8	11/2	•

Custom Mold Brass Extension Plugs are available cut and re-threaded to any exact length for an additional charge of \$.50 ea. Order 100 or more pieces of one length, and exact length adjustment is free.