

NPT Pipe Plugs

- Finest quality - Made In USA.



- Std qty. 100 pcs. on sizes 1/16 - 3/8. No additional charge for partial boxes.
- Standard plugs are flush type (7/8 taper). Oversize (3/4 taper) also available from stock.

Catalog Number	Pipe Plug Material	Thread Size (NPT)										Stock Item
		1/16	1/8	1/4	3/8	1/2	3/4	1	1 1/4	1 1/2	2	
BF-	Brass	•	•	•	•	•	•	•	•	•	•	•
SF-	Alloy Steel	•	•	•	•	•	•	•	•	•	•	•
SSF-	Stainless	•	•	•	•	•	•	•	•	•	•	•

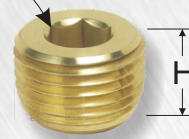
Pipe Size (NPT)	Plug Height H (in)
1/16-27	.250
1/8-27	.250
1/4-18	.406
3/8-18	.406
1/2-14	.531
3/4-14	.531
1-11 1/2	.656
1 1/2-11 1/2	.656
1 1/4-11 1/2	.656
2-11 1/2	.656


To order, specify Catalog Number and pipe size. Example: BF- 1/4

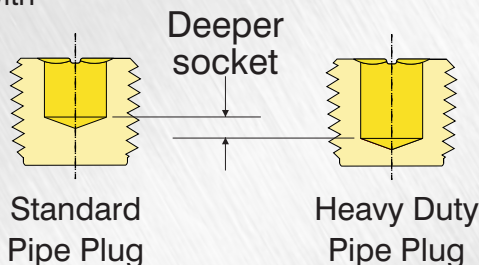
Heavy Duty NPT Pipe Plugs

With Patented  Technology....

Extra deep socket is stronger, and will not strip out.



- Standard brass flush seal plugs with  forming technology for maximum wrenching torque.
- Extra deep socket can't "round out" when plugs are installed or removed.
- Order in any quantity



Catalog Number	Pipe Size (NPT)	Plug Height H (in)	Stock Item
XTBF- 1/16	1/16-27	.296	•
XTBF- 1/8	1/8-27	.312	•
XTBF- 1/4	1/4-18	.421	•
XTBF- 3/8	3/8-18	.484	•
XTBF- 1/2	1/2-14	.625	•
XTBF- 3/4	3/4-14	.625	•

BSPT Pipe Plugs

- These plugs have BSPT(tapered) threads. They will seal BSPT or BSPP threaded holes.
- Made in USA to DIN 906 standard.
- Order in any quantity



Catalog Number	Material	Thread Size (BSPT)									Stock Item
		1/16	1/8	1/4	3/8	1/2	3/4	1	1 1/4		
BF-BSPT-	Brass	•	•	•	•	•	•	•	•	•	
SF-BSPT-	Steel	•	•	•	•	•	•	•	•	•	
SSF-BSPT-	Stainless	•	•	•	•	•	•	•	•	•	

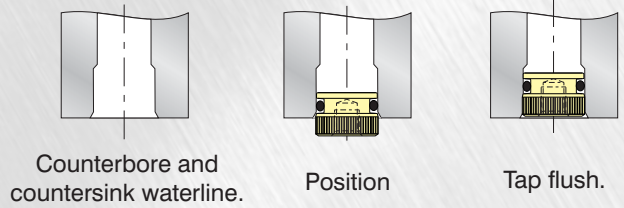
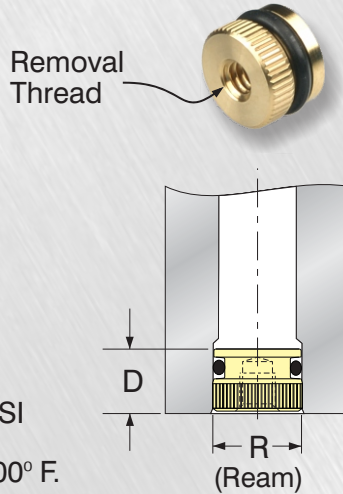
Pipe Size (BSPT)	Plug Height H (mm)
1/16-28	8
1/8-28	8
1/4-19	10
3/8-19	10
1/2-14	10
3/4-14	13
1-11	14
1 1/4-11	16

To order, specify Catalog Number and pipe size. Example: BF-BSPT- 1/4

Tap-In O-Ring Plugs

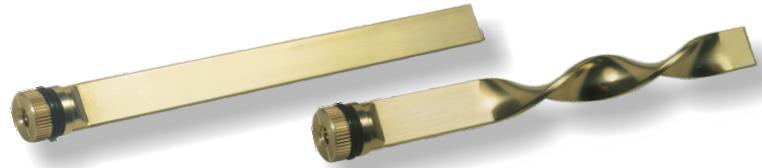
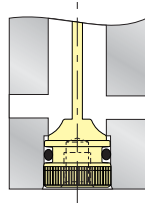
**NO THREADS,
NO LEAKS**

- Eliminate expansion stresses of taper plugs.
- NO BACKUP required.
- Easy machining and installation - just tap in.
- Positive O-Ring seal to 200 PSI
- Viton Seal allows temps to 400° F.



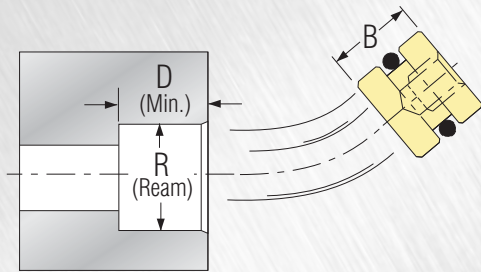
Catalog Number	Nominal Pipe Size	C'bore Dia. (±.002) R	C'bore Depth (Min.) D	Removal Thread Size	Stock Item
TIP281	1/16	.281	.312	6-32	•
TIP375	1/8	.375	.312	10-32	•
TIP500	1/4	.500	.375	1/4-20	•
TIP625	3/8	.625	.437	5/16-18	•
TIP750	1/2	.750	.500	3/8-16	•

Tap-In Blade Baffles also available.



Push-In O-Ring Plugs

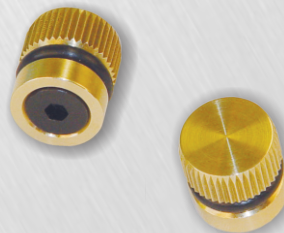
- O-Ring Plugs are used when backed up by other mold inserts, holder block, etc.
- Available in Brass or Stainless Steel.
- Standard Buna O-ring provides seal to 210° F
Viton O-rings and quad rings available.



Brass Catalog Number	Stainless Catalog Number	Ream Size R (+.005)	B (+.000) (-.005)	Min. Depth D	Removal Thread Size	Brass	Stainless
OR-281	OR-281SS	.281	1/4	.250	6-32	•	•
OR-375	OR-375SS	.375	5/16	.312	10-32	•	•
OR-500	OR-500SS	.500	5/16	.312	10-32	•	•
OR-625	OR-625SS	.625	7/16	.437	1/4-20	•	•
OR-750	OR-750SS	.750	1/2	.500	1/4-20	•	•
OR-1000	OR-1000SS	1.000	5/8	.625	3/8-16	•	•
OR-1187	OR-1187SS	1.187	5/8	.625	3/8-16	•	•

Threadless Diverting Plugs

- Withstand pressures to 72 psi.
- Buna O-ring will seal rough or corroded holes.
- Available in sizes to fit standard or oversize cooling channels



Catalog Number	Drill Size	Nominal Pipe Size	Hex Size	Overall Length	Stock Item
BTP-10	11/32	1/8	5/64	.50	•
BTP-10-OS	23/64	1/8	5/64	.50	•
BTP-20	7/16	1/4	1/8	.56	•
BTP-20-OS	29/64	1/4	1/8	.56	•
BTP-40	9/16	3/8	1/8	.62	•
BTP-40-OS	37/64	3/8	1/8	.62	•
BTP-60	11/16	1/2	1/8	.62	•
BTP-60-OS	45/64	1/2	1/8	.62	•

Pipe Check

PC-100

PC-100 simply determines the size of pipes from 1/16" to 1/2" NPT. Made entirely of heavy gauge aluminum, this model is perfect for the office, warehouse, or factory floor. Just turn the thread into the hole that fits to determine pipe size.

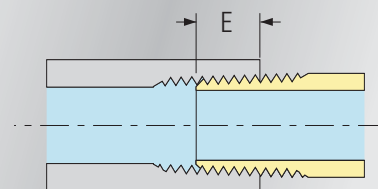


Pipe Thread Data

Most ordering mistakes are caused by measuring the pipe size of the fitting or component incorrectly. The nominal size of any pipe does not in fact refer to either the outside diameter (O.D.) or the inside diameter (I.D.) of the pipe. The table lists standard pipe sizes along with the actual O.D. and I.D. for each size. Keep in mind that manufacturers may slightly modify these dimensions to strengthen or enhance the performance of a product.

Pipe Size (NPT)	Threads Per Inch	Outside Dia. of Pipe	Inside Diameter of Pipe	Tap Drill Size		
				Without Ream	With Ream	E
1/16	27	.312	.209	1/4	15/64	.250
1/8	27	.405	.269	11/32	21/64	.250
1/4	18	.540	.364	7/16	27/64	.300
3/8	18	.675	.493	9/16	9/16	.300
1/2	14	.840	.622	45/64	11/16	.420
3/4	14	1.050	.824	29/32	57/64	.545
1	11 1/2	1.315	1.049	1 9/64	1 1/8	.661
1 1/4	11 1/2	1.660	1.380	1 31/64	1 15/32	.681
1 1/2	11 1/2	1.900	1.610	1 23/32	1 45/64	.681
2	11 1/2	2.375	2.067	2 3/16	2 11/64	.697

Once the correct pipe size has been determined, the "E", dimension may be used to determine the length of the component required to assemble properly when fully tightened.



Pipes shown actual size

